



Office / Warehouse Building for Sale

**8440 EAGLE CREEK PARKWAY
SAVAGE, MN 55378**

Building Size:

3,432 SF- Office
16,600 SF- Warehouse
20,032 SF - Total

Site Size:

1.54 Acres

Sale Price:

Negotiable

2022 Est. RE Taxes:

\$66,930.00

Property Highlights:

- 20,032 Square Foot Building
- Two (2) Dock Doors
- Three (3) Drive-in Doors (Two 12' x 14' and One 14' x 14')
- 16' Clear Height
- Air Conditioned Throughout
- Power: 800 Amps, 3-Phase 480 Volt
- 40 Parking Spaces
- Demised Smaller Warehouse is Separately Metered
- Built in 2002

For information, please contact:

Brian Netz

Senior Managing Director
t 612-430-9947
brian.netz@nmrk.com

Lucas Long

Associate Director
t 612-430-9952
lucas.long@nmrk.com

100 South Fifth Street, Suite 2100
Minneapolis, MN 55402

NEWMARK

nmrk.com

The information contained herein has been obtained from sources deemed reliable but has not been verified and no guarantee, warranty or representation, either express or implied, is made with respect to such information. Terms of sale or lease and availability are subject to change or withdrawal without notice.



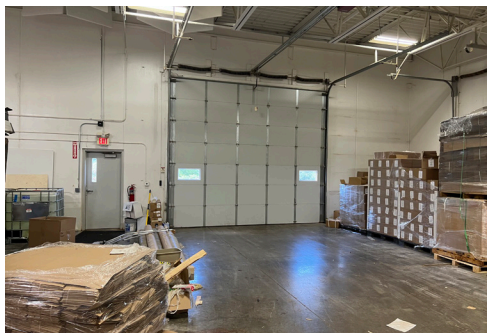
CONTACT

Brian Netz
Senior Managing Director
t 612-430-9947
brian.netz@nmrk.com
nmrk.com

Lucas Long
Associate Director
t 612-430-9952
lucas.long@nmrk.com

8440 EAGLE CREEK PARKWAY | SAVAGE, MN 55378

Photos



CONTACT

Brian Netz

Senior Managing Director

t 612-430-9947

brian.netz@nmrk.com

nmrk.com

Lucas Long

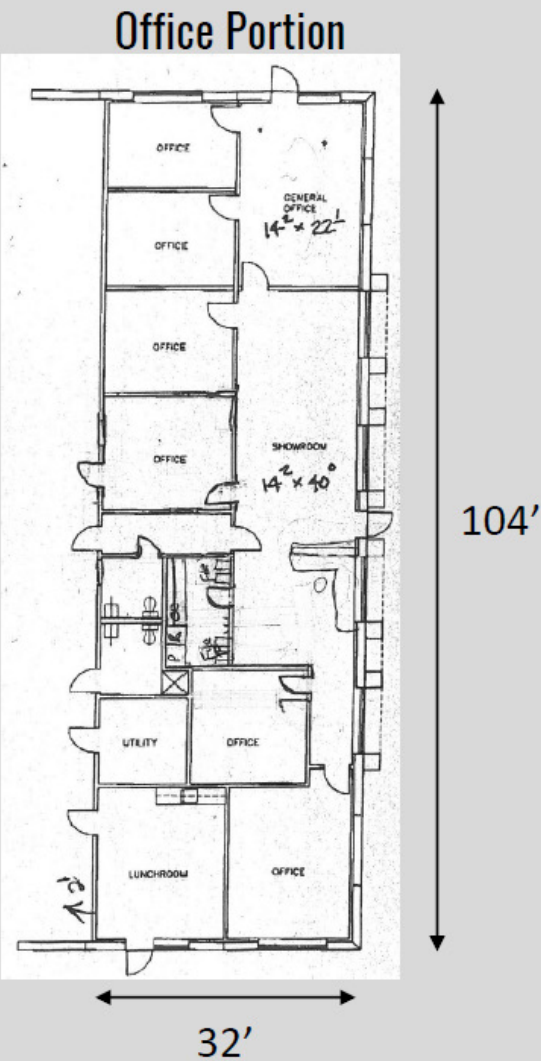
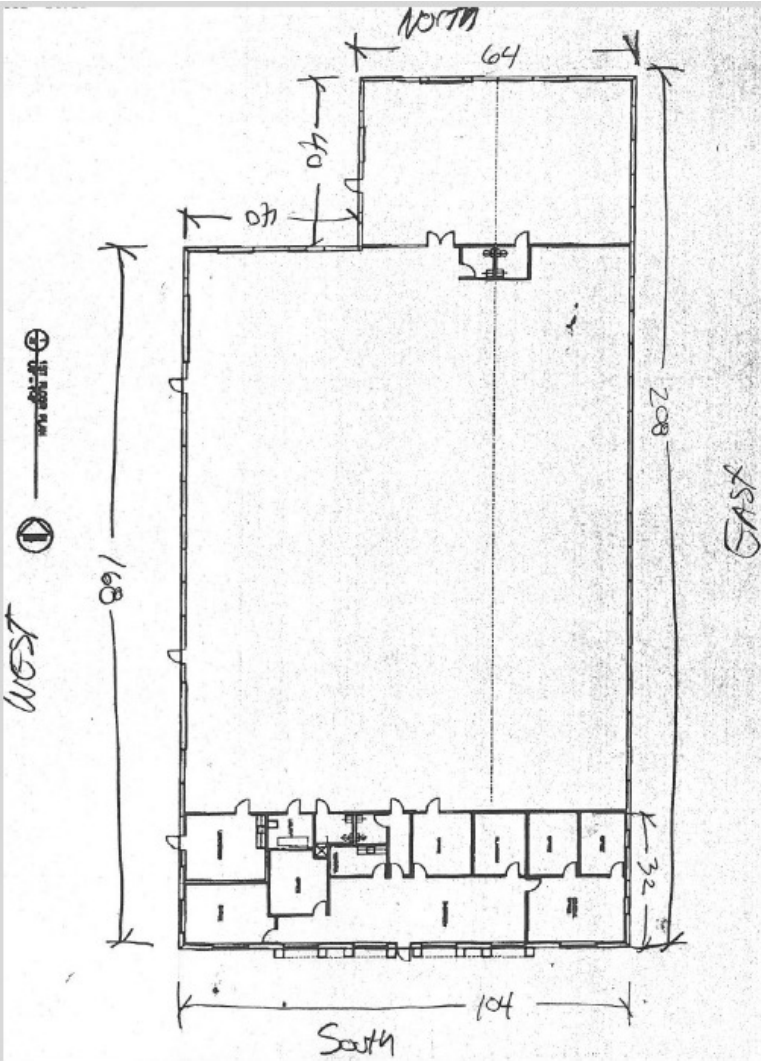
Associate Director

t 612-430-9952

lucas.long@nmrk.com

NEWMARK

Floor Plans



CONTACT

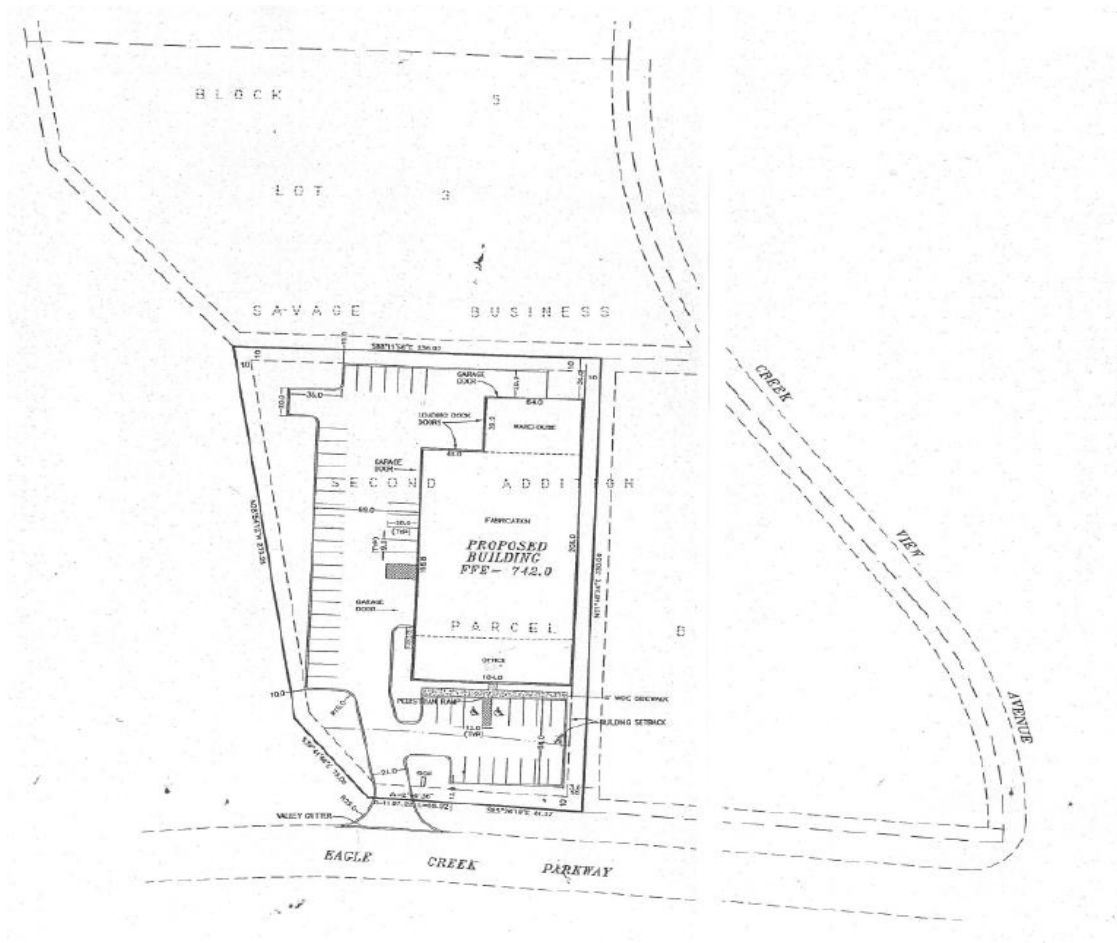
Brian Netz
Senior Managing Director
t 612-430-9947
brian.netz@nrmk.com
nrmk.com

Lucas Long
Associate Director
t 612-430-9952
lucas.long@nrmk.com

NEWMARK

8440 EAGLE CREEK PARKWAY | SAVAGE, MN 55378

Survey



CONTACT

Brian Netz

Senior Managing Director

t 612-430-9947

brian.netz@nmrk.com

nmrk.com

Lucas Long

Associate Director

t 612-430-9952

lucas.long@nmrk.com

NEWMARK